

# FAME

Information on companies in the UK and Ireland

- Detailed financial information
- Additional business intelligence
- Flexible software for search and analysis
- Simple to customise



JORDANS



BUREAU VAN DIJK

ELECTRONIC PUBLISHING

FAME is a database of financial information and business intelligence covering companies in the UK and Ireland. It combines comprehensive information with flexible software to help you create searches and analyse your results. **It contains details of around seven million companies.**

## Company information

The company information can be broken down as follows:

- 2 million companies in a detailed format
- 200,000 companies in a summary format
- Details of 700,000 companies that are active but not required to file accounts or have yet to file their first accounts
- 4 million companies that are no longer active. These are included so you can research patterns in default and confirm previous existence.

## Additional business intelligence

As well as company financials FAME has business and company-related news, market research, financial strength indicators, directors and contacts, images of original filings and detailed corporate structures.

## Flexible software for search and analysis

FAME is ideal for simple company name queries and multi-step Boolean searches. It has BvD's new generation software for easier searching and analysis. You can search and manipulate the content on FAME using hundreds of options. Using FAME you can:

- Assess a company's financial strength
- Find companies that match your chosen profiles including size, industry and location
- Understand, and illustrate, a company's corporate structure and find all companies in the same "corporate family"
- Compile a detailed picture of a company including background information, relevant news stories and M&A deals and rumours
- View a company's position in its peer group
- Illustrate your results graphically, within FAME, to help you interpret your results
- Use the alerting system to watch companies, or peer groups, and monitor them for changes or new information.

## Simple to customise

FAME can be customised via our Web Services and linked to your internal systems. You can:

- Create tailored analyses by using your own definitions of regions and financial elements
- Enrich your internal databases by creating live links between them and FAME, or combining FAME with your CRM system
- Completely customise your reports and lists
- Upload groups of companies, such as your clients or supplier base, so you can use the software in FAME to analyse and monitor them and identify trends.

## Modular FAME

You choose which modules of FAME to access:

### FAME A:

Companies with latest accounts within the last five years, with either:  
Turnover > £1.5 million  
or Profits > £150,000  
or Shareholder Funds > £1.5 million.

### FAME B:

Companies with latest accounts within the last five years, with either:  
Turnover > £500,000 and < £1,500,000  
or Shareholder Funds > £500,000 and < £1,500,000  
or Fixed Assets or Current Assets or Current Liabilities > £500,000.

### FAME C:

Shareholder Funds or Fixed Assets or Current Assets or Current Liabilities > £175,000 and < £500,000.  
Companies with latest accounts over 5 years old.

### For companies in a detailed format the reports include:

- Company name and registered number
- Registered office address, phone, e-mail and web addresses
- Main exchange and ticker symbol
- Security and price information, LSE indices, current and annual stock data and valuations, daily, weekly and monthly pricing series, market capitalisation figures
- Primary and other trading addresses and phone numbers
- Trade description, primary and secondary SIC codes (UK 2003), brand names and major sectors, US SIC, NAICS and NACE codes are also provided
- Standard peer group
- Names of the bankers, advisors, auditors and previous auditors
- Audit details including indicators of qualified/unqualified accounts, a post balance sheet event, audit exemption and contingent liabilities
- Numbers and details of the holding and subsidiary companies, including foreign holding and subsidiary companies
- Names of the current and previous directors with their dates of birth, address, appointment dates, other previous directorships plus an indicator as to whether they are a shareholder in the company
- Heads of department and other senior contacts
- Number of employees
- Company type
- Date of incorporation
- Filing changes
- Changes to company name
- Accounting reference date
- Company status
- Credit scores, and ratings, for all available years, Gazette data, six years of CCJ history and mortgage data
- List of all shareholders for non-quoted companies
- List of shareholders down to 0.1% of ownership for quoted companies
- Directors' remuneration and highest paid director
- M&A activity relating to the company (including rumours) from the ZEPHYR database

### Plus financial information for up to 10 years

The accounts are in either UK GAAP or IFRS formats, depending on the accounts filed by the company. The reports contain a maximum of:

- 63 profit and loss account items
- 74 balance sheet items
- 10 cash flow items
- 28 financial and profitability ratios plus financial trends and changes

### Scanned images

Scanned images of documents such as annual return, annual accounts, documents of incorporation, change in director or secretary, special resolution, liquidator's account, increase in capital, memorandum and articles plus others, as filed at Companies House and the Companies Registration Office in Ireland.

### News

Up to the minute news stories from various major news providers - available via the BvD News module.

### Market research

Industry Profile Reports and Company Reports provided by Datamonitor.

### Search by hundreds of criteria including:

- Registered company name and number
- Primary and secondary UK SIC codes (2003), trade description, brands and three other activity codes
- Company type and status
- Date of incorporation and year end
- Number of employees, including growth and decreasing rates
- All financial items including growth and decreasing rates
- Registered and trading addresses, from region to postcode including any line of the address - you can even identify companies by industrial estate
- Names of the directors, auditors, previous auditors, bankers
- Job titles and functions of directors and managers

### Time series searching is available for all the financial items

- Nominate specific years out of the ten years' history to search by
- Search by a consistent growth rate over a period of years

### Stay aware with our alerts

You can set up alerts so you're emailed about changes to any part of a company report including new accounts, a change in directors or ownership. You can also watch for companies falling into adverse status or any rumours about takeovers or mergers. When you've created a search giving you a group of companies that fulfill your chosen criteria, you can create an alert to watch the group. It will notify you if new companies qualify to join it, or existing companies no longer qualify.

### Analysis

FAME includes a number of options to help you analyse your search results. You can:

- Plot a company's financials over time
- Rank a group of companies by any financial variable
- Benchmark a company against its peers and create graphs of comparative performance
- Aggregate the accounts of a group of companies so you can appreciate the total amount represented by a group, or market share figures for specific companies
- Create a segmentation analysis to see how your companies are distributed.

# FAME

Information on companies in the UK and Ireland

FAME is very flexible and ideal for:

famecompanyinfo.com

## Business development

- Know more about your leads and prospects
- Identify prospect companies
- Create targeted lists of new prospects
- Develop your accounts
- Produce more accurate sales plans and feasibility studies
- Understand your existing client base better
- Enrich/populate your CRM system
- Integrate with your CRM system

## Procurement and supply chain management

- Source and pre-qualify suppliers
- Improve your supplier knowledge and enrich your intelligence
- Identify corporate links to leverage your negotiations
- Manage your supplier numbers and their diversity

## Academic research and libraries

- Use as teaching tool
- Provide as an end user resource

## Credit analysis and risk management

- Assess companies' financial strength and benchmark against peers
- Analyse companies by your own parameters
- Create bespoke templates
- View detailed corporate structures to assess wider exposure
- Stay aware via alert system

## Compliance, KYC and due diligence

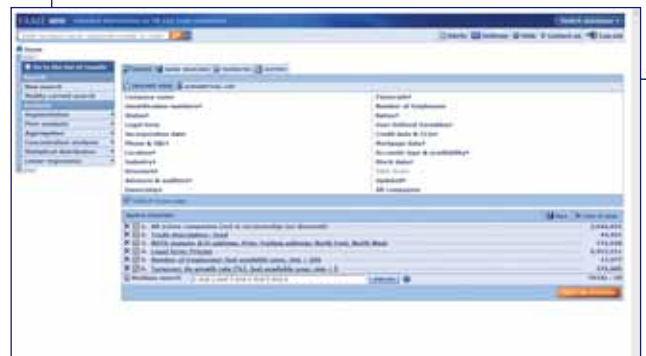
- In-depth research on individual companies to confirm legitimacy
- Trace shareholders back to the beneficial owner/controlling interest
- Identify all companies with the same parent
- Append your files with our detailed data using our matching systems
- Screen for conflicting interests in potential clients
- Use alert software for ongoing changes including change to ownership status

## CRM management and enrichment

- Integrate with your CRM system
- Enrich in house data with additional content
- Clean your data against a reputable source

## Corporate finance, M&A and advisory firms

- Combine search criteria to identify target companies
- Use peer analysis software to compare companies' performances
- Look for director/owners who may be looking to exit
- Use our deal information, including deal value and multiples, to help with valuations
- Identify and assess financial irregularities for forensic accounting



JORDANS

21 St Thomas Street  
Bristol  
BS1 6JS

Tel: 0117 923 0600  
Fax: 0117 923 0063  
businessinformation@jordans.co.uk

jordans.co.uk

Northburgh House  
10 Northburgh Street  
London  
EC1V 0PP

Tel: 020 7549 5000  
Fax: 020 7549 5010  
london@bvdep.com



BUREAU VAN DIJK  
ELECTRONIC PUBLISHING

24 Great King Street  
Edinburgh  
EH3 6QN

Tel: 0131 200 7110  
Fax: 0131 200 7120  
edinburgh@bvdep.com

bvdep.com

Brook House  
Fountain Street  
Manchester  
M2 2BQ

Tel: 0161 234 6880  
Fax: 0161 234 6889  
manchester@bvdep.com